

P R E S E N T I N G



THE  
LEGACY

— *Primo* —

# THE LEGACY *Primo*

## TWO ICONIC TOWERS

Designed In Partnership With Leading **HOSPITALITY GROUP\***

Exclusive Entrance



Private Club



Concierge Services



High-end Apartment Specifications



Heightened level of Privacy & Exclusivity



\*EIH Limited (Oberoi Hotels Group) has signed an exclusive MOU with Silverglades Group for design & consultancy services for the Legacy project (Definitive Agreements to be executed in due course).



An **Address** For  
The Distinguished Few

A Masterplan Of  
**Excellence**





THE LEGACY

Be Captivated by the Majestic Welcome of  
**URBAN PLAZA** as You Arrive Home



A Private Driveway Brings You to the  
**ARRIVAL PLAZA**



Marvel in the **SERENITY** as You Arrive

# EXCLUSIVE CLUB PRIMO

Swimming Pool



Gymnasium



Spa & Sauna



Restaurant & Bar



Business Rooms



Banquet Hall



Creche



The Exclusive **CLUB PRIMO** For A Select Few





# NATUREWALK

Immerse In Serenity As  
Every Moment Gets Enveloped By **Nature's Magic**

Escape to Tranquillity with  
**PRISTINE LANDSCAPE**



THE  
LEGACY

Enter Our **GRAND LOBBY**  
& Feel the Warmth Embracing You



Keeping Your Peace At  
Paramount, We Ensure Your  
**Privacy** Is Attended To  
Perfection



Designed On The Canvas Of  
**Green Future**

Eco-friendly measures & energy-efficient systems

Sustainable living boulevard

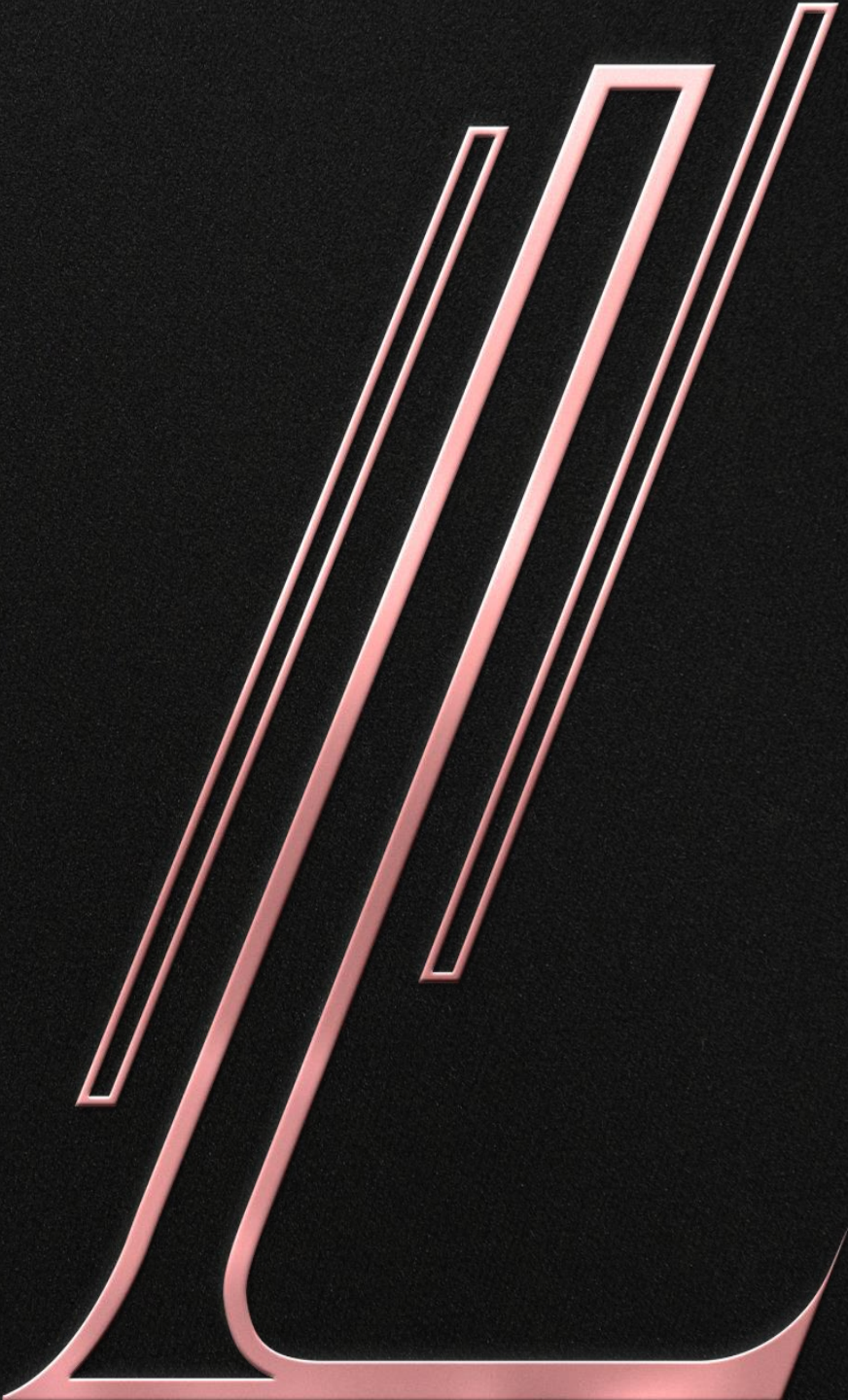


## 3 Tier Security

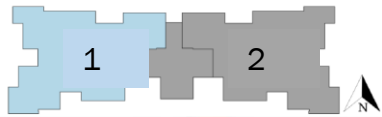
24/7 Perimeter Vigilance & Patrolling  
Boom Barriers / Guarded Access  
CCTV Surveillance & Recording



F L O O R P L A N S



# 4BHK + S TYPICAL UNIT (Tower C1)



Carpet Area - 2810 sq.ft./260 sq.m.

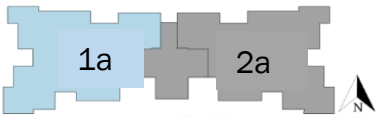
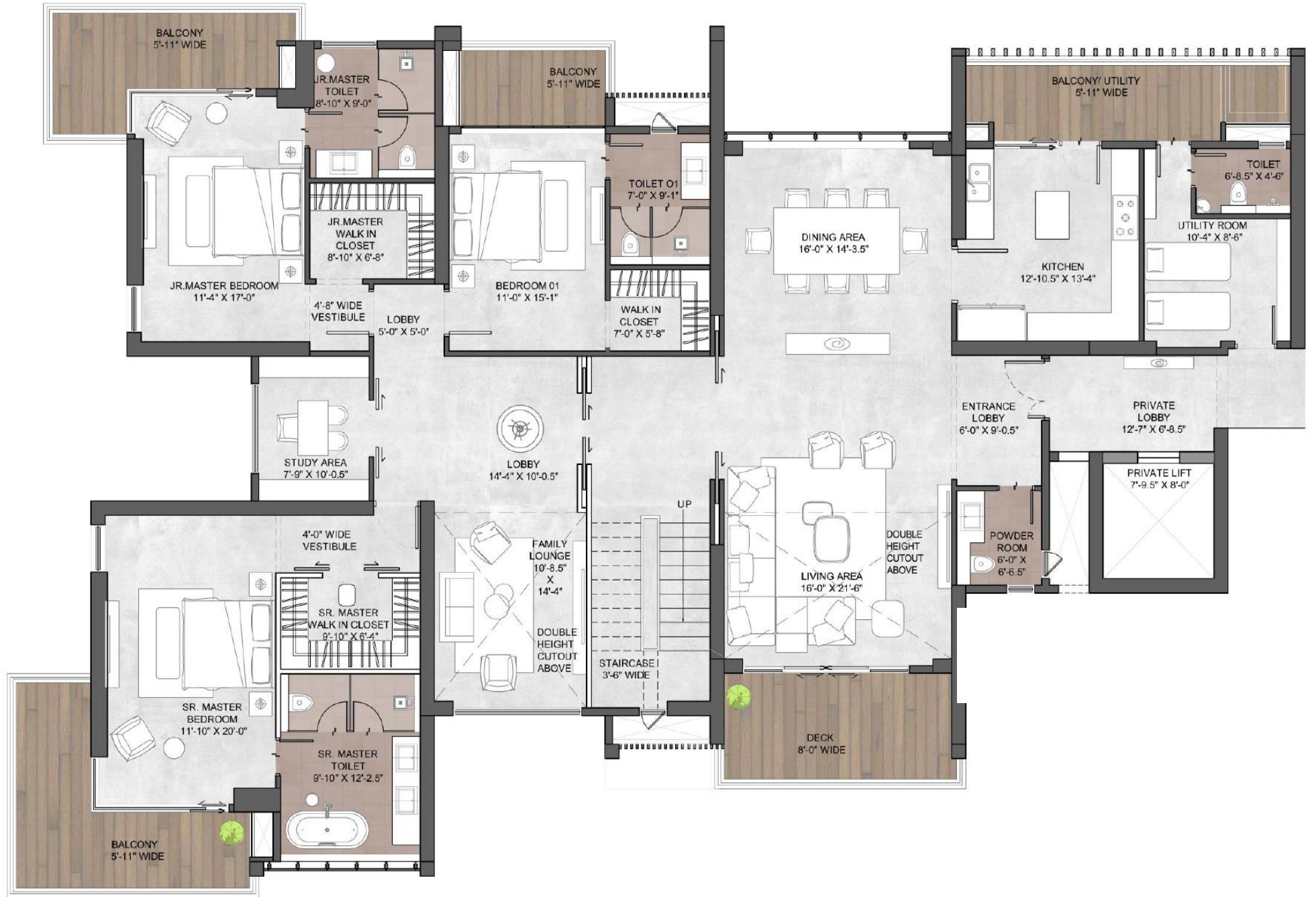
Exclusive Area - 3686 sq.ft./ 342 sq.m.

Super Area - 4800 sq.ft./ 445 sq.m.

\*Layout shown represents apartment 1 (Even Floor)  
 \*Apartment 2 will be the mirror image of 1  
 \* Odd Floors will have slight change in balcony design as indicated in floorplan



# 4BHK + S PENTHOUSE UNIT (Tower C1) LEVEL 1



Carpet Area - 4164 sq.ft./386 sq.m.  
 Exclusive Area - 5820 sq.ft./ 540 sq.m.  
 Super Area - 7700 sq.ft./ 715 sq.m.

\*Layout shown represents apartment 1a (Even Floor)  
 \*Apartment 2a will be the mirror image of 1a

4BHK + S  
PENTHOUSE UNIT  
(Tower C1) LEVEL 2





APARTMENT SPECIFICATIONS



AREA	FLOOR	WALLS	CEILING	DOORS	WINDOWS	FIXTURES / FITTINGS	OTHERS
<b>Living &amp; Dining Room</b>	Premium Italian/Imported Marble	Acrylic Emulsion Paint	Acrylic Emulsion Paint	Polished Veneer Main Door	UPVC/Aluminum Window Frames with Toughened, Heat Reflective Glass	VRV AC System DAIKIN/HITACHI/TOSHIBA or Equivalent	Wireless Internet Access Point Video Door Phone Biometric Main Lock
<b>Kitchen</b>	Fully Charged Vitrified Tiles	Tiles & Acrylic Emulsion Paint	Acrylic Emulsion Paint	Flush Door / Skin Moulding	UPVC/Aluminum Window Frames with Toughened Heat Reflective Glass	Granite/Engineered Stone counter. Imported CP fittings & Double Bowl SS sink with Drain Board, Hob & Chimney	High Quality / Imported Modular Kitchen Cabinetry
<b>Master Bedroom</b>	Engineered Wooden Flooring	Acrylic Emulsion Paint	Acrylic Emulsion Paint	Flush Door / Skin Moulding	UPVC/Aluminum Window Frames with Toughened, Heat Reflective Glass	VRV AC System DAIKIN/HITACHI/TOSHIBA or Equivalent	
<b>Master Toilet</b>	Premium Italian/Imported Marble	Premium Imported Marble and Acrylic Emulsion Paint	Gypsum board ceiling, painted in Acrylic Emulsion Paint	Flush Door / Skin Moulding	UPVC/Aluminum Window Frames with Toughened, Heat Reflective Glass	Shower Partitions, Vanities, Exhaust Fan, Towel Rail, Towel Ring, Toilet Paper Holder, Robe Hook.	Single Lever CP fittings, Health Faucet, His/Her Wash Basins & wall-hung WC (Kohler/Grohe/Roca/ equivalent)
<b>Bedrooms</b>	High grade Laminated Wooden Flooring	Acrylic Emulsion Paint	Acrylic emulsion paint.	Flush Door / Skin Moulding	UPVC/Aluminum Window Frames with Toughened Heat Reflective Glass	VRV AC System DAIKIN/HITACHI/TOCHIBA or Equivalent	
<b>Toilets</b>	Premium Tiles	Combination of Tiles and Acrylic Emulsion Paint	Gypsum board ceiling, painted in Acrylic Emulsion Paint	Flush Door / Skin Moulding	UPVC/Aluminum Window Frames with Toughened, Heat Reflective Glass	Shower Partitions, Vanities, Exhaust Fan, Towel Rail, Towel Ring, Toilet Paper Holder, Robe Hook.	Single Lever CP fittings, Health Faucet, His/Her Wash Basins & wall-hung WC (Kohler/Grohe/Roca/ equivalent)
<b>Balcony / Decks</b>	Wooden Finish Deck Flooring / Anti-skid Tiles	Plaster with Texture Paint (Ext. Grade)	Texture Paint (Ext Grade)	UPVC Window Frames with Toughened Glass	SS Railings with Toughened Glass	Utility balcony to have the provision of electrical connectivity	
<b>Domestic Quarter</b>	Vitrified / Anti-skid tiles	Acrylic Emulsion Paint	Acrylic Emulsion Paint	Flush Door / Skin Moulding	UPVC/Aluminum Window Frames with Toughened, Heat Reflective Glass	Toilet with Basic CP Fittings, Wash Basin, Spout (Essco by Jaquar or Equivalent)	
<b>Others</b>	Developer shall offer discounted Wardrobe and Home Appliance Packages closer to time of Possession for customers to choose from on optional basis.					High Speed Lifts	Hardware: Hettich/ Hafelle Switches: Legrand / Crabtree Advanced Smart-phone Enabled Home Automation System

\*Above Specifications are for Tower C1 only.



OWN YOUR LEGACY TODAY

Disclaimer: "The Legacy" is a residential group housing colony being developed by Silverglades Homes LLP (LLPIN: ABZ-9999), having its registered office at 506, 5th Floor, Time Square Building, B Block, Sushant Lok - 1, Gurugram-122002. The Legacy is being developed in two phases, Phase I is being developed on 9.950 acres ~ 40266.22sqm of land (part of total project area of 10.4625 acres ~42340sqm), under License No. 215 of 2023 granted by the Department of Town and Country Planning, Haryana, located in Sector-63A, Gurugram, Haryana. The Legacy - Phase I has received RERA Registration No. 88 of 2024, vide RERA Certificate No.RC/REP/HARERA/GG/861/593/2024/88 dated 16.08.2024. This phase will consist of Tower A, B1, B2, and C1, which will include 341 residential apartments, along with a club / community centre and shopping centre, as per building plans approved by DTCP vide Memo No. ZP-1917/PA(DK)2024/20315 dated 05/07/2024. All approvals are available for viewing at our office during office hours on working days. Facilities, layouts, specifications, renderings, and information contained herein are indicative and subject to change without prior notice.